



# Royal Sydney Yacht Squadron

## Membership Information





# Welcome,

Thank you for your interest in becoming a Member of the Royal Sydney Yacht Squadron.

Since our founding in 1862, RSYs has drawn together a vibrant community united by a love for sailing and a shared appreciation of our private members' club facilities, both on the water and ashore. This sense of camaraderie is what truly sets RSYs apart, fostering a welcoming environment where Members can enjoy the sport of sailing, make full use of our Club's facilities, and embrace our 'Member for Life' philosophy. We are fortunate that the many Members before us had the vision to not only acquire our wonderful waterfront real estate but also to develop our expansive sailing infrastructure and wonderful clubhouse.

I've had the privilege of being part of the Club since the late 1980s, experiencing virtually everything RSYs has to offer—from competitive Saturday racing, social twilight sailing, Bridge and superb dining, to the incredible friendships and networking opportunities within our Membership. It's been especially meaningful to watch my

four children, grow up sailing in the youth program, fostering their love of sailing and continuing to use the Club with their many friends from the 'Learn to Sail' years. I look forward to seeing my grandchildren experience the same love of the Club in the years ahead.

I hope this overview provides you with a sense of the community and opportunities awaiting you at RSYs. If you have any questions, please feel free to contact our membership team using the details provided.

We look forward to welcoming you to our Club as a Member soon.

Russell B. Taylor

**RSYS Commodore**





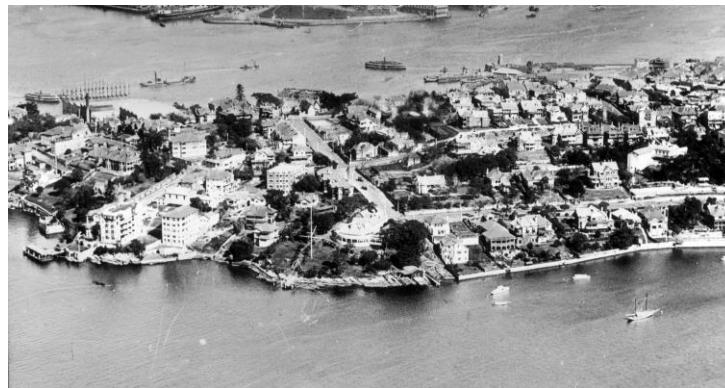
# Our History

On the 8<sup>th</sup> of July 1862, William Walker and eighteen prominent Sydney yachtsmen signed the Club's foundation document, starting the Royal Sydney Yacht Squadron's grand journey to becoming one of the world's leading yacht clubs.

Since our inauguration, the Club has noted many exceptional achievements both on-and-off the water including multiple challenges for the Admiral and America's Cups, active participation in major ocean racing events, cultivation and support of numerous Olympians and hosting of multiple major Olympic, world and

national championship events.

These achievements have been complemented by significant development to our Club facilities including the enlargement of the historic Carabella clubhouse and waterfront facilities. These developments have focused on catering to the evolving needs and interests of our Members.





# Our Flag Officers

The Royal Sydney Yacht Squadron is led by our General Committee in conjunction with our management team. The General Committee is composed of five Flag Officers and four additional Members hailing from a range of sailing and corporate backgrounds.

The General Committee have a responsibility to our

Members for the policies, strategic direction, effect oversight and governance of the business and affairs of our Club. In carrying out its responsibilities, the Committee considers both the interests of our Members as a whole and the broader community inline with our mission of promoting and supporting the sport of sailing.

## RSYS Flag Officers (2024 - 2027)



**Commodore**  
Russell Taylor



**Vice Commodore**  
Karyn Gojnich OLY



**Rear Commodore**  
Michael Lindsay



**Captain**  
Robert Dickson



**Honorary Treasurer**  
Ross Littlewood



# Club Facilities

Our historic Clubhouse and grounds provide a friendly base from which our Members can enjoy the beautiful Sydney Harbour from both on-water and ashore.

Within the Clubhouse, our Members enjoy world class dining options at one of our two restaurants, professional corporate facilities and event rooms capable of comfortably hosting over 150 guests.

On-water, our Members have access to the 'Pond', a quick access dock, the Club's fleet of Elliott 7s sports boats and stand-up paddle boards. Members also have access to the Waterfront boatshed that offers Members discounted yacht repair services and storage facilities.







# Club Sailing

As one of Australia's premier yacht clubs, RSYs offers a wide range of racing and sailing opportunities year-round.

During the summer season, our Sailing Department organises an extensive inshore racing program including weekly twilight racing on Tuesday, Thursday, Friday and Sunday evenings, one-design mini-regattas on Saturdays and a Spring/Summer handicap series for larger yachts.

The Club also caters for the growing interest in offshore racing with events such as the Short Ocean Pointscore series including the historic Gascoigne Cup.

During the winter season, the Club continues to offer a range of sailing opportunities for both yachts and one-design boats.





# Sailing Academy

Established in 1960, the mission of the RSYB Sailing Academy is to foster and promote sailing within the greater community and to support our Members throughout their sailing journey.

Since its inception, the Academy has supported thousands of sailors through our Discover Sailing and performance training programs, including senior RSYB Flag Officers, Olympians, America's Cup champions and World Champions.

In addition to providing world class training opportunities, the RSYB Sailing Academy also places a significant emphasis on developing a sense of community that helps attract and retain Members for life. Our community engagement initiatives range from experience days on Members' yachts, to Youth Sailing social functions, all designed to help connect sailors from the different programs offered.







# Waterfront Facilities

Offering a comprehensive list of services including daily tender service, 18-tonne travel lift, hardstand storage, private moorings and fuel dock, our Waterfront facilities are designed to support our sailors with all their yachting needs.

Our in-house services are complemented by a range of onsite contractors including shipwrights, riggers, painters, marine mechanics, engineers and electricians.

All our services are fully compliant with EPA and NSW RMS environmental impact policies and the Waterfront has recently invested in further reducing the impact of our operations.

Our Club also holds several moorings in Pittwater available to Members cruising the northern waterways.







# Events & Functions

Our historic Clubhouse is one of Sydney's most beautiful venues for both grand and intimate events, with almost every room offering unrivalled views of Sydney Harbour.

Paired with our excellent team of event coordinators, award-winning Chefs and dedicated cellar team, the Squadron can guarantee a world-class experience at every event.

Members can also host events on our rooftop terrace, pristine lawns or in our intimate cellar dining room.





# Cruising Opportunities

A unique and welcoming community within the greater Membership, the RSYS Cruising Division offers sailors a diverse program of short weekend cruises, monthly presentation nights and co-host the annual Squadron Cruise.

Open to both experienced and novice cruisers, the division's monthly presentation nights cover of practical topics such as engine maintenance, rigging and

navigation, alongside tales of grand adventures from both Members and guest speakers.

On-water the short weekend cruises and annual Squadron cruise provide a great opportunity for our Members to explore the local water-ways and prepare for adventures abroad.







# Discover Sailing

As an Australian Sailing accredited training centre, the RSYS Sailing Academy offers Members several Discover Sailing programs for kids, teens and adults.

The Tacker's Program is the first step in every kid's sailing journey and is open to sailors aged 7 - 12 years old. This program is run throughout the year and offers quarterly holiday camps.

The OutThere Teenager Holiday camps are specifically designed for teens interested in getting on the water. These camps are a great opportunity for sailors to try keelboats and explore Sydney Harbour with their friends.

The Adult Discover Sailing courses cater for a wide range of experience levels and use the Club's keelboat and dinghy fleets.





# Weddings and Celebrations

Celebrate your engagement and wedding on the Squadron grounds with unrivalled views across Sydney Harbour. Our experienced team will support you at every step of the journey and ensure you have an unforgettable experience.

Our venues cater for a range of sizes, occasions and themes.

Whether you're looking for a small, intimate affair, or a grand occasion to fit all your friends and family – we have the perfect space for you.







# Fort Denison Cellar

Nestled within the RSYS Clubhouse is the Fort Denison Cellar, one of Sydney's best boutique cellars.

Awarded the three Goblets accolade for ten consecutive years by the Gourmet Traveler Magazine, our cellar offers a unique selection of hand-picked wines and spirits from around the world and world class service from our expert staff.

In addition to our amazing collection, the Fort Denison Cellar regularly hosts exclusive Member only dinners, tasting experiences and Masterclasses.





# Membership

Over the last 160 years, our diverse community has grown to a community of 3,000 Members who regularly attend the Club for a variety of sailing and onshore activities.

Our membership is categorised into six groups based on age, location and affiliation.

- Metropolitan (40 years and over)
- Youth (5 - 17 years or Family Membership)
- Intermediate (18 to 39 years)

- Country (Usual place of residence, per electoral roll, more than 100km radius from Kirribilli)
- Absentee (place of residence outside Australia)
- Affiliate (membership for the spouse or partner of a current financial Member)

Each cohort receives different benefits and level of access to the Club. These benefits and access levels are highlighted in the next four pages.







# Membership Benefits

	Metropolitan	Intermediate			Country	Absentee	Family		Youth (5 - 17)
		A (18-24)	B (25-29)	C (30-3)			Affiliate	Youth (5 - 17)	
<b>Aquatic Benefits</b>									
Access to RSYS Stand-up Paddle Boards (SUPs)	√	√	√	√	√	√	√		
Access to RSYS Laser and Elliott 7s fleets	√*+	√*+	√*+	√*+	√*+	√*+	√*+	√*+	√*+
Access to Waterfront Jib Cranes	√+	√+	√+	√+	√+	√+	√+		
Access to Club Tender Service	√*	√*	√*	√*	√*	√*	√*		
Participate in RSYS Sailing Academy programs and courses	√	√	√	√	√	√	√	√	√
Eligible for international regatta participation support	√^	√^	√^	√^	√^	√^	√^	√^	√^
Australian Sailing personal accident insurance	√	√	√	√	√	√	√	√	√
Participate in Volunteer Training	√	√	√	√	√	√	√		

√\* Subject to additional fees

√^ Subject to additional criteria

√+ Induction required



# Membership Benefits

	Metropolitan	Intermediate			Country	Absentee	Family		Youth (5 - 17)
		A (18-24)	B (25-29)	C (30-39)			Affiliate	Youth (5 - 17)	
<b>Aquatic Benefits</b>									
Apply for/occupy a Mooring/Hardstand storage facility space	√*	√*	√*	√*	√*				
Apply for/occupy a dinghy storage space	√*	√*	√*	√*	√*			√*	√*
Apply for/occupy a Waterfront Locker	√*	√*	√*	√*	√*				√*
<b>Social Benefits</b>									
Personalised Member Card and Club Access permissions	√	√	√	√	√	√	√		
Car Park Access (1x Vehicle)	√	√	√	√	√	√	√^		
Invite and sign-in guests to RSYs	√	√	√	√	√	√	√		
Access to private Function Facilities	√	√	√	√	√	√	√		
Access to food and beverage outlets	√	√	√	√	√	√	√		

√\* Car park access limited to one (1) vehicle per family at a time



# Membership Benefits

	Metropolitan	Intermediate			Country	Absentee	Family		Youth (5 - 17)
		A (18-24)	B (25-29)	C (30-39)			Affiliate	Youth (5 - 17)	
<b>Social Benefits</b>									
Access to food and beverage outlets	√	√	√	√	√	√	√		
Eligible for Letter of Introduction to visit Reciprocal Clubs	√	√	√	√	√	√	√		
Access to accommodation facilities for family and friends	√	√	√	√	√	√	√		
Access to Opening Day festivities	√	√	√	√	√	√	√		
Access to year-round Club social activities	√	√	√	√	√	√	√		
<b>Financial Benefits</b>									
House account credit privileges (Direct Debit facility)	√	√	√	√	√	√	√		
Pay annual subscription in monthly instalments (Direct Debit facility)	√	√	√	√	√	√	√		
Entrance Fee equal to one (1) year subscription fee	√	√	√	√	√	√			

√\* Subject to additional fees





# Membership Benefits

	Metropolitan	Intermediate			Country	Absentee	Family		Youth (5 - 17)
		A (18-24)	B (25-29)	C (30-3)			Affiliate	Youth (5 - 17)	
<b>Club Opportunities</b>									
Propose/second a candidate for membership	√	√	√	√	√	√	√		
Propose/second any member for Life membership	√	√	√	√	√	√			
Referee support of a membership application	√	√	√	√	√	√	√		
Volunteer with our specialist race management and support teams	√	√	√	√	√	√	√		
Attend AGM meetings	√	√	√	√	√	√	√		
Voting rights at AGM	√	√	√	√	√	√			
Stand for election to General Committee	√		√	√	√	√			
Stand for election to Election Committee	√	√	√	√	√	√			