

56th Royal Sydney Yacht Squadron Cruise

11 - 18 April 2026



SAILING INSTRUCTIONS



Photo by Sue Swanson

CRUISE OFFICIALS AND PERSONNEL

CRUISE CAPTAIN

Doug Sturrock (Windflyt)
Phone 0419 258 388

CRUISE COMMITTEE

Paul Thackray (Phoebe)
Glen Madsen (Phoenix)
John Taylor (Allegro)
Verity Hodgkinson (Alibi)
Graeme Richardson (Seadrift)
Richard Chapman (Nand V)

RACE OFFICER

Rob Ridley
Phone 0418 645 032
VHF 72

RACE COMMITTEE

Consists of the Race Officer and Cruise Committee

CRUISE NEWS

sailing@rsys.com.au

SUPPORT VESSELS

Mischief & Gitana
VHF 72

TABLE OF CONTENTS

Page 3

Schedule of Races & Program of Events

Page 4

Rules
Daily Radio Brief / Notice to Competitors
Change to the Sailing Instructions
Flag Signals
Division Flags
Courses

Page 5

Marks
The Start
Starting Procedure
Recalls
Shortening Course

Page 6

Time Limits
The Finish
Penalty System
Protests
Results
Retirements
Change in Participants Plans

Page 7

Rendering Assistance
Tow Lines
Use of Engine during Racing
Radio Communication
Radio Schedules

Pages 8 – 11

Appendix: A – Offshore Race
 B – Inshore Races
 C – Alternate Courses

Page 12

Emergency Management
Emergency Contacts

Schedule of Races & Program of Events

<p>Saturday 11 April Offshore - Race 1 Port Jackson to Broken Bay</p>	<p>Warning Signal: 1030hrs Start Line: Between Wedding Cakes Tides: Low - 0950hrs - 0.69m High - 1555hrs - 1.21m Finish Line: Vicinity of Flint & Steel</p>	<p>Overnight Anchorage: Halletts Beach Social Event: from 1530hrs Theme: 'Barefoot Black-Tie Shindig' Sausage Sizzle on the beach, provided & hosted by the cruise committee. BYO drinks</p>
<p>Sunday 12 April Inshore - Race 1 Broken Bay / Pittwater</p>	<p>First Warning Signal: 1230hrs Start Line: Vicinity of Flint & Steel Tides: Low - 1044hrs - 0.63m High - 1652hrs - 1.29m Finish Line: Vicinity of Challenger Hd.</p>	<p>Morning Tea: Welcome to new Cruise participants - onboard 'Nand V' - finish 1030 Overnight Anchorage: Smiths Creek Social Event: from 1630hrs Raft Up - Progressive Dinner</p>
<p>Monday 13 April Inshore - Race 2 Broken Bay / Pittwater Cruising Group Lunch – 1200hrs 'Shed' Akuna Bay Restaurant</p>	<p>First Warning Signal: 1230hrs Start Line: Vicinity of Flint & Steel Tides: Low - 1127hrs - 0.55m High - 1736hrs - 1.40m Finish Line: Vicinity of Challenger Hd.</p>	<p>Overnight Anchorage: Yeomans Bay Social Event: Casual Raft Up</p>
<p>Tuesday 14 April Lay Day – Yeomans Bay <i>Stand Up Paddle Board Competition 1000hrs BYO board</i></p>		<p>Kuring-Gai Motor Yacht Club – Lunch BYO drinks, glasses, plates, and utensils</p>
<p>Wednesday 15 April Inshore - Race 3 Broken Bay / Pittwater Cruising Group Lunch – 1200hrs The 'Boat House' – Patonga</p>	<p>First Warning Signal: 1230hrs Start Line: Vicinity of Flint & Steel Tides: Low - 1242hrs - 0.42m High - 1854hrs - 1.67m Finish Line: Vicinity of Challenger Hd.</p>	<p>Overnight Anchorage: Jerusalem Bay Social Event: Casual Raft Up</p>
<p>Thursday 16 April Inshore - Race 4 (Alternate Helm) Broken Bay / Pittwater</p>	<p>First Warning Signal: 1230hrs Start Line: Vicinity of Flint & Steel Tides: High - 0703hrs - 1.73m Low - 1317hrs - 0.38m Finish Line: Vicinity of Challenger Hd.</p>	<p>Overnight Anchorage: Refuge Bay Social Event: from 1630hrs 'Canapé Cookoff' Afloat</p>
<p>Friday 17 April Inshore - Race 5 Broken Bay / Pittwater</p>	<p>First Warning Signal: 1230hrs Start Line: Vicinity of Flint & Steel Tides: High - 0750hrs - 1.71m Low - 1356hrs - 0.38m Finish Line: Vicinity of Challenger Hd.</p>	<p>Overnight Anchorage: Refuge Bay Social Event: Casual Raft Up</p>
<p>Saturday 18 April Offshore - Race 2 Broken Bay / Port Jackson</p>	<p>Warning Signal: 1100hrs Start Line: Off Barrenjoey Head Tides: High - 0839hrs - 1.66 Low - 1435hrs - 0.41 Finish Line: Between Wedding Cakes.</p>	<p>Destination: RSYS Pond Social Event: Unofficial get together CCA</p>

Sailing Instructions (SIs)

The Organising Authority (OA) is the Royal Sydney Yacht Squadron (RSYS), located at 33 Peel Street Kirribilli, 2061

The notation [NP] in a rule means that a boat may not protest another boat for infringing that rule. This changes RRS 60.1(a). [DP] denotes a rule for which the penalty is at the discretion of the protest committee.

1. Rules

- 1.1 Racing will be governed by the rules, as defined in the 2025-2028 Racing Rules of Sailing (RRS) of World Sailing, and the prescriptions and special regulations of Australian Sailing (AS), as may be amended.
- 1.2 In the event of conflict between any of the rules or regulations, other than RRS, the sailing instructions will prevail. This changes RRS 63.5 (c).
- 1.2 All non-racing participants agree to be bound by:
 - The requirements of the Boating (Safety Equipment) Regulations of NSW,
 - The International Regulations for Preventing Collisions at sea.
- 1.3 Racing is subject to the Advertising Code as set out in World Sailing (WS), Regulation 20.
- 1.4 [DP] All participating yachts, competing or cruising, are required to fly the Squadron Cruise Flag and if racing, their Division flag continuously from their backstays from first joining and until leaving the Cruise.
- 1.5 [DP] Yachts shall not carry anchors protruding beyond the bow while racing.
- 1.6 [DP] Yachts shall not set any sails forward of a mast which are not **normally** carried forward of that mast when working to windward. Any sails set forward of a mast shall be attached to the stay in the centerline of the yacht and only one such sail may be boomed. (*Sails such as a Gennaker or Code Zero are not permitted*).

2. Daily Radio Brief & Notice to Competitors

At 0930hrs each day the Race Committee will broadcast, via VHF channel 72, the weather forecast, any race instructions including the course to be sailed and any other useful information that may affect the day's activities. At the conclusion of these announcements a representative of Cruising in Company will broadcast the daily schedule.

3. Changes to the Sailing Instructions / Program

Alterations to the sailing instructions, daily program and overnight locations shall indicated by one or more of the following methods, VHF radio channel 72, flag signals, in writing, or shall be displayed on a whiteboard on the Committee Vessel (CV). Attention shall be drawn to the fact that an alteration has been made by displaying Code Flag 'L' from the CV.

4. Signal Flags & Pennants

In these instructions, flags or pennants mentioned are those of the International Code of Signals unless otherwise stated.

5. Additional Signals

The following additional signals may also be used and displayed with or before the first warning signal.

Signal	Indicates
Flag "A" over the course signal	Sail the Alternate Course
Flag 'L'	Alteration/Amendment to the program

6. Division Flags

Division flags will be:	Division 1	Code Flag	'U'
	Division 2	Code Flag	'T'
	Division 3	Code Flag	'F'

7. Racing Areas

Racing shall be conducted between the waters of Port Jackson and Broken Bay including the waters both inside Port Jackson (Sydney Harbour) and Broken Bay (Pittwater / Hawkesbury).

8. The Course

- 8.1 The course to be sailed shall be indicated via a flags and pennants, displayed from the committee vessel with or before the first warning signal. **Courses are detailed in Appendix A, B and C of these instructions.**

9. Sketch Charts

- 9.1 The sketch charts attached are for the assistance of competitors and DO NOT form part of the Sailing Instructions.
- 9.2 Navigators may elect to use these charts to determine the order of mark rounding's to complete the days course.
- 9.3 The position of any marks including Latitude and Longitude positions are approximate only. The chart datum used throughout these instructions is WGS 84.

10. Marks

- 10.1 A laid mark (LM) will be a yellow inflatable mark, cylindrical in shape approximately 1.4m in height with the initials RSYS.
- 10.2 Pittwater Area – fixed marks described as an Orange Can or Yellow Pyramid shape with the initials RPAYC/RMYC may be used to form some courses.
- 10.3 Navigational marks may also be used to form part of the course descriptions.
- 10.4 The Start and Finish mark will be a yellow inflatable mark with the initials RSYS.
- 10.5 The Latitudes, Longitudes, Distances, Compass Bearings shown herein, are intended to assist the competitors locate various rounding marks and shall be regarded as approximate only. All compass bearings are magnetic.

11. The Start

- 11.1 The Starting Line shall be between an orange flag displayed on the Committee Vessel situated at the starboard end of the line and the start mark at the port end of the line.
- 11.2 Offshore Races, all yachts shall start and compete as one division.
- 11.3 Inshore Races, all yachts shall start in their designated division with the Warning Signal for each succeeding division made with the Starting Signal of the preceding division.
- 11.4 Scheduled Warning Signals and Starting Order are as follows:

Location	Between the Wedding Cakes	Vicinity of Flint & Steel	Vicinity of Flint & Steel	Vicinity of Flint & Steel	Vicinity of Flint & Steel	Vicinity of Flint & Steel	Off Barrenjoey Head
Division	Offshore Race 1	Inshore Race 1	Inshore Race 2	Inshore Race 3	Inshore Race 4	Inshore Race 5	Offshore Race 2
1	1030	1230	1230	1230	1230	1230	1100
2		1235	1235	1235	1235	1235	
3		1240	1240	1240	1240	1240	

- 11.5 A boat whose Warning Signal has not been made shall keep clear of the starting area.
- 11.6 A boat starting later than ten (10) minutes after her Starting Signal may, at the discretion of the Race Committee be scored Did Not Start (DNS).

12. Starting Procedure

- 12.1 All boats participating in any race shall contact (log on with) the Race Committee Vessel (VHF channel 72), from 1 hour prior to the first Scheduled Warning Signal each day and relay the following information, **Boat Name**, and **Persons on Board**. Failure to do so may result in a boat being scored Did Not Compete (DNC), this changes RRS 63.
- 12.2 Yachts participating in the Nav Est competition shall advise the Race Committee of their estimated elapsed time, in minutes for each race in conjunction with 12.1 above.

13. Recalls

- 13.1 To assist competitors the Race Committee may advise individual or general recalls over VHF channel 72.
- 13.2 An error or omission in the advice referred to in clause 13.1 above shall not be grounds for protest or redress.
- 13.3 A boat scored as OCS shall be penalized by adding five (5) minutes or 5% whichever is greater to their elapsed time. This amends RRS Appendix A – Scoring.

14. Shortening Course

- 14.1 Any course may be shortened in accordance with RRS 32. When shortening a course, if a Divisional Flag and Flag "S" are displayed at a mark of the course the shortened course is to apply to that division only.

14.2 In the case of races where these instructions require a yacht to cross a line between two points or marks, yachts shall be required to cross this line regardless of the position of the Committee Vessel.

15. Time Limits

15.1 **Offshore Races** **Inshore Races** – (including any alternate courses)

Combined	1600hrs
----------	---------

Division	
1	1600hrs
2	1605hrs
3	1610hrs

15.2 Any yacht which has not completed the course by the time limit shall be scored as Did Not Finish (DNF), (Amends RRS 35).

15.3 Time Limit has expired:

Any yacht that has not finished or reported her retirement, will report her position and her intentions to the Race Committee by 1610hrs. Any yacht failing to report to the Race Committee at this time may be disqualified.

16. The Finish

16.1 When viewed from the last mark of the course the Finish Line shall be between the Committee Vessel, displaying a blue flag, located on the starboard end of the line and a finish mark at the port end.

16.2 When the CV is on station, the finish Line and one meter on either side of the finish line shall rank as an obstruction and boats shall not cross it from either direction unless finishing. Any boat which fails to observe this instruction may be scored DSQ without a hearing (Amends RRS 60.1)

16.3 The race committee reserves the right to relocate the finish line to ensure all boats are finished within the time limit. This changes RRS 63.

17. Finishing Times

In the event of the Committee Vessel not being on station at the finish of a race, yachts are to take and immediately record their own finish times. Their recorded finishing time must be transmitted to the Race Committee within two hours of the yacht's finishing time. The Finishing Point shall be when a competing yacht is a beam of the finish mark.

18. Penalty System

Rule 44.1 is changed so that the two-Turns Penalty is replaced by the One-Turn Penalty.

19. Protests

The Race Committee looks to competitors to observe the RRS and do her penalty turns or retire immediately if they breach them. Protests must be lodged with the Race Committee within one hour of the last yacht finishing in her division. The Committee Vessel should be informed of a yacht's intention to protest. Protests shall be heard as soon as possible and any competitor having reason to believe that they could be required at a hearing should keep in touch with the Race Committee.

20. Scoring

Refer to NOR, clause 11.

21. Pointscores

Refer to NOR, clause 11.2.

22. Results & Handicaps

Yacht's handicaps are shown on the List of Entries for the first race and for subsequent races will be available on the RSYS web site. The Race Committee intends to announce provisional place getters for each division daily at 1730 hours on VHF channel 72. Any weather warnings available to the race committee will also be broadcast at this time.

23. Retirements & Safety Regulations

Yachts retiring from any race will inform the Race Committee directly by radio, phone or in some other fast and efficient manner. If this is impracticable, please contact Marine Rescue South Head on 9337 5033 or Sydney Water Police on 1800 658 784 at the first possible opportunity so they can relay a message to the Race Committee.

24. Changes in Participants Plans

- 24.1 Any changes to a yacht's plans from that on their entry form must be advised to the Race Committee as soon as possible.
- 24.2 The importance of reporting any change of plans is stressed. Failure to report may force the Race Committee to assume that the yacht is missing and to report this to the Police. Any resulting action could cause unnecessary work for the authorities and avoidable embarrassment to the owner.

25. Rendering Assistance

All boats are bound by Fundamental Rule 1.1 of the RRS - Helping those in danger.

26. Tow Lines

- 26.1 All yachts will ensure that good serviceable long tow lines are on board and readily accessible. Also, suitable anti-chaffing gear such as split hose should be carried to prevent damage to tow lines.
- 26.2 The towing vessel will advise the towed vessel what is required of her.

27. Use of Engine During Racing

- 27.1 If during a race, a yacht is required due to an emergency, to use its engine in gear she shall submit a declaration to the Race Officer when finishing and a time percentage shall be applied. This penalty shall be applied at the absolute discretion of the Race Officer.
- 27.2 This penalty will not apply for any yacht rendering assistance to another vessel.

28. Use of Manual and stored Power

- 28.1 Yachts may use power assisted winches and self-steering devices.
- 28.2 Competitors using self-steering devices are reminded to maintain a suitable and adequate watch at all times.

29. Official Boats

The official start and finish boat may be 'MISCHIEF' or 'GITANA'. When on station the official boat will display the RSYS Race Committee Burgee, which is the Royal Sydney Yacht Squadron Burgee surrounded by a white border.

30. Radio Communication

- 30.1 As far as practicable Race Officials will maintain radio communication on VHF - Channel 72 & VHF - Channel 16.
- 30.2 From 1 hour prior to the first scheduled warning signal each day until all yachts are accounted for, the Race Committee will endeavor to keep continuous watch on these channels. Any cruise yachts sighting anything unusual (in particular any yacht possibly in distress, smoke signals or flares) shall report the matter at once on one of these channels until an acknowledgment is received from the Committee Vessel.

31. Radio Schedules

- 31.1 Offshore / Passage Race) – **all competing yachts that have yet to complete the race** are to report their position, if not finished at 1610 hours by VHF Radio Channel 72 when called by the Race Committee.
- 31.2 The Race Committee will come up 2 minutes before the scheduled times and request that unfinished yachts stand by to make a position report.
- 31.3 Yachts will be called in **Alphabetical** order from the list of entries and are required to provide their position in latitude and longitude.
- 31.4 Yachts shall give the following information in Position Reports:
- Name of Yacht
 - Position as at the commencement time of the schedule, in Latitude and Longitude and whether proceeding North or South and that it is her intention to complete the race.
- 31.5 The Committee Vessel may request some yachts to make special calls between Radio Schedule times in order to estimate when the Finishing Line should be manned.
- 31.7 Yachts failing to comply with the requirements of Position Reports whilst racing may be liable to disqualification from the series.
- 31.8 It is the Competitor's responsibility to keep a listening watch at all times during the Ocean/Passage – Races.

Appendix 'A'

A1. Offshore Race 1

Saturday 11 April 2026

Sydney Harbour to Broken Bay

A1.1 **Time of the Scheduled Warning Signal:** 1030hrs

A1.2 **Starting Order:** All yachts shall start as one division.

A1.3 **Division Flag:** Int Code flag 'W'

A1.4 **Start Line:** Between the Eastern and Western Wedding Cakes.

A1.5 **Distance:** Approximately 23 miles

A1.6 **Course:** Start – Mark 1 – Mark 2 (P) – Finish

Mark 1: Leave to starboard the Red port lateral mark 0.2 nm West of Inner South Head

Approximate LAT **33°50' 1"** LONG **151°16' 5"**

Mark 2: Leave to port a yellow inflatable mark located approximately half a mile North of Barrenjoey Light

Approximate LAT **33°34' 4"** LONG **151°19' 8"**

A1.7 **Finish:** Vicinity of Flint and Steel Point

A1.8 **Radio Schedule:**

Any yacht not finished by 1610 hrs shall comply with sailing instruction clause 31 – page 7 which requires any competing yachts that have **not** completed the course to inform the race committee of her position.

A1.9 **Time Limit:** 1600hrs.

A2. Offshore Race 2

Saturday 18 April 2026

Broken Bay to Sydney Harbour

A2.1 **Time of the Scheduled Warning Signal:** 1100hrs

A2.2 **Starting Order:** All yachts shall start as one division.

A2.3 **Division Flag:** Int Code flag 'W'

A2.4 **Start Line:** Approximately 1 nautical mile East of Barrenjoey Lighthouse.

A2.5 **Distance:** Approximately 21 miles

A2.6 **Course:** Start – Mark 1 (P) – Finish

Mark 1: Leave to port the Red lateral mark 0.2 nm West of Inner South Head

Approximate LAT **33°50' 1"** LONG **151°16' 5"**

A2.7 **Finish:** Between the Eastern and Western Wedding Cakes.

A2.8 **Radio Schedule:**

Any yacht not finished by 1610 hrs shall comply with sailing instruction clause 31 – page 7 which requires any competing yachts that have **not** completed the course to inform the race committee of her position.

A2.9 **Time Limit:** 1600hrs.

Appendix 'B'

B1. Inshore Courses

B1.1 Start & Finish Lines:

Sunday 12 April	Race 1	Start: Vicinity of Flint & Steel	Finish: Vicinity of Challenger Head
Monday 13 April	Race 2	Start: Vicinity of Flint & Steel	Finish: Vicinity of Challenger Head
Wednesday 15 April	Race 3	Start: Vicinity of Flint & Steel	Finish: Vicinity of Challenger Head
Thursday 16 April	Race 4	Start: Vicinity of Flint & Steel	Finish: Vicinity of Challenger Head
Friday 17 April	Race 5	Start: Vicinity of Flint & Steel	Finish: Vicinity of Challenger Head

B1.2 Scheduled Warning Signals & Starting Order:

Division 1 - 1230hrs Division 2 - 1235hrs Division 3 - 1240hrs

B1.3 Time Limit:

Division 1 - 1600hrs Division 2 - 1605hrs Division 3 - 1610hrs

B1.4 Courses:

All marks are to be passed to STARBOARD unless the mark is suffixed (p), which indicates the mark is to be passed to port.

Division 1	(Approximately 14 miles)
Course 1	Start – LIM – SP – CGMB – LIM (p) – FS (p) – Finish
Course 2	Start – SP – TP – CGMB – FS (p) – Finish
Course 3	Start – LIM – BJH – SP – LIM – BJH – FS (p) – Finish
Course 4	Start – CGMB (p) – SP (p) – BJH (p) – LIM (p) – FS (p) – Finish
Course 5	Start – LIM – SP – CGMB – LIM – SP – FS (p) – Finish
Course 6	Start – LIM – SP – CGMB – SP – FS (p) – Finish
Course 7	Start – LIM – SP – FS – LIM – WH – FS (p) – Finish

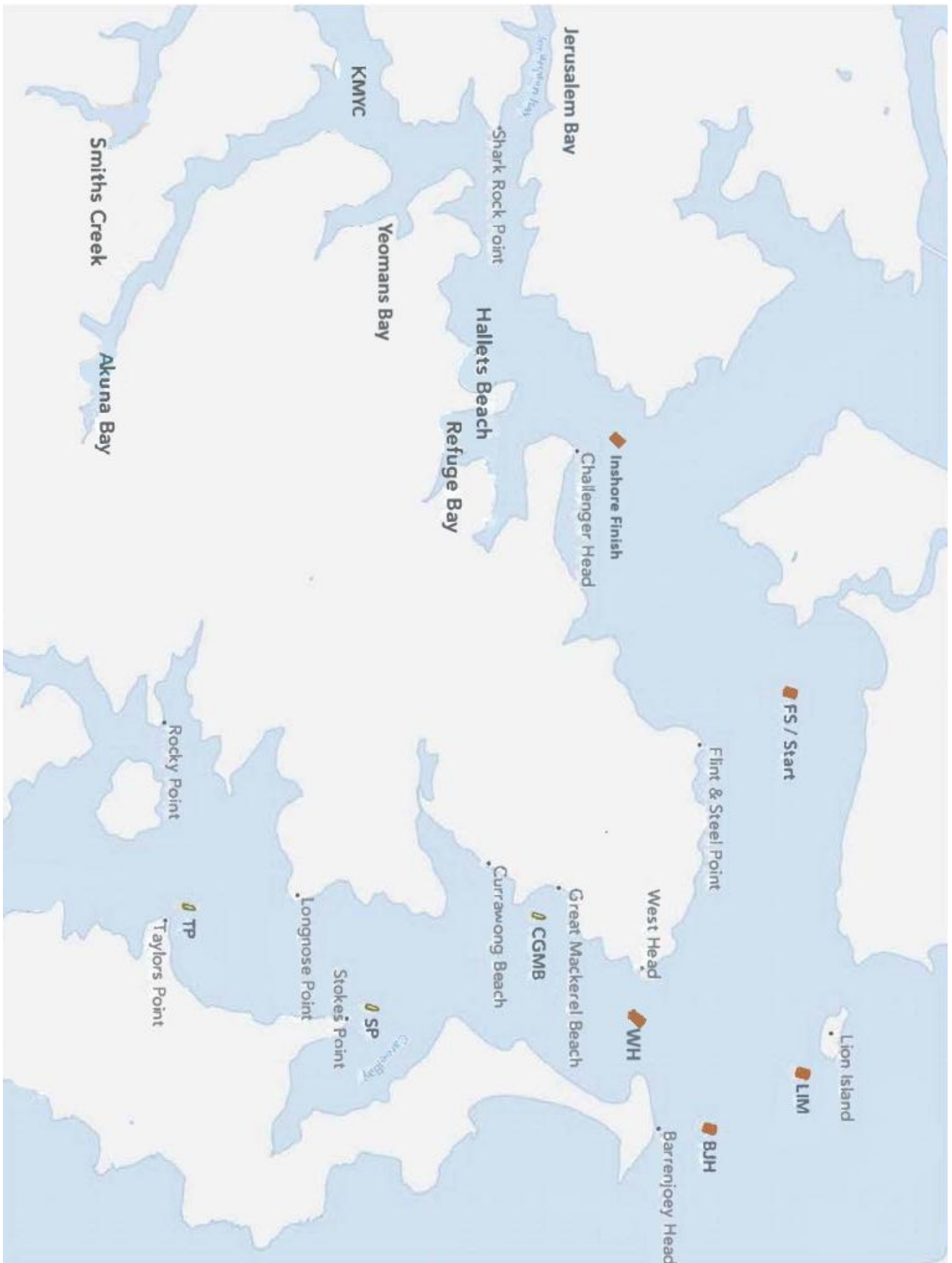
Division 2	(Approximately 11 miles)
Course 1	Start – LIM – SP – FS (p) – Finish
Course 2	Start – SP – CGMB – FS (p) – Finish
Course 3	Start – LIM – BJH – CGMB – FS (p) – Finish
Course 4	Start – CGMB (p) – BJH (p) – LIM (p) – FS (p) – Finish
Course 5	Start – LIM – CGMB – LIM – SP – FS (p) – Finish
Course 6	Start – LIM – SP – CGMB – FS (p) – Finish
Course 7	Start – LIM – SP – LIM – FS (p) – Finish

Division 3	(Approximately 8 miles)
Course 1	Start – LIM – WH – FS (p) – Finish
Course 2	Start – SP – FS (p) – Finish
Course 3	Start – LIM – BJH – FS (p) – Finish
Course 4	Start – CGMB (p) – BJH (p) – FS (p) – Finish
Course 5	Start – LIM – CGMB – FS (p) – Finish
Course 6	Start – LIM – SP – FS (p) – Finish
Course 7	Start – LIM – CGMB – FS (p) – Finish

B1.5 Marks:

SP	Stokes Point – approx. Lat 33°36' 7" Long 151°18' 8" Fixed yacht mark situated approx. 200m NW of Stokes Point
CGMB	Currawong & Great Mackerel Beach – approx. Lat 33°35' 7" Long 151°18' 3" Fixed yacht mark situated between Currawong and Great Mackerel Beach
TP	Taylor's Point – approx. Lat 33°37' 9" Long 151°18' 3" Fixed yacht mark situated to the NW of Taylor's Point
WH	West Head – approx. Lat 33° 34' 7" Long 151°18' 9" Laid mark, approximately midway between First Head and Shark Rock
BJH	Barrenjoey Head – approx. Lat 33° 34' 4" Long 151°19' 8" Laid mark, approximately half a mile North of Barrenjoey Head
FS	Flint & Steel – approx. Lat 33° 33' 9" Long 151°16' 8" Laid mark, approximately 400 metres North of Flint and Steel Point
LIM	Lion Island Mark – approx. Lat 33°33' 8" Long 151°19' 4" Laid mark, approximately 400metres S/SE of Lion Island.

B1.6 Marks for Inshore Races



Appendix 'C'

C1. Alternate Courses

- C.1 In the event of adverse weather the race committee may decide to use one of the following courses.
- C.2 To draw attention to an alternate course the start boat will fly Code Flag "A".
- C.3 All marks to be passed to starboard unless indicated by (P) denoting the mark is to be passed to port.
- C.4 **Scheduled Warning Signals & Starting Order:**
1230hrs – Division 1
1235hrs – Division 2
1240hrs – Division 3
- C.5 **Alternate Course A1** (*Approximately 15 nm*)
Start: Between the Eastern and Western Wedding Cakes.
MW AS Manly West buoy
ME AS Manly East buoy
SM AS mark 10m southeast of the South Cardinal mark at Shark Island, leaving Shark Island to starboard.
FD Fort Denison
OB AS Obelisk Bay buoy
SM AS mark 10m southeast of the South Cardinal mark at Shark Island, leaving Shark Island to starboard.
Finish: Between the Eastern and Western Wedding Cakes.
- C.6 **Alternate Course A2** (*Approximately 12 nm*)
Start: Athol Bay
CI (p) Clarke Island
OB AS Obelisk Bay buoy
SM AS mark 10m southeast of the South Cardinal mark at Shark Island, passing Shark Island to starboard.
OB AS Obelisk Bay buoy
PP AS Point Piper buoy
OB AS Obelisk Bay buoy
Finish: Northwest of Clarke Island
- C.7 **Alternate Course A3** (*Approximately 10.5 nm*)
Start: Clareville Beach
RP Fixed yacht mark either orange can or yellow pyramid situated to the Northeast of Rocky Point
SP (p) Fixed yacht mark 200 metres northwest of Stokes Point
RP Fixed yacht mark either orange can or yellow pyramid situated to the Northeast of Rocky Point
SP (p) Fixed yacht mark 200 metres northwest of Stokes Point
CGMB Fixed yacht mark located between Currawong & Great Mackerel Beach
Finish: Vicinity of Careel Bay
- C.8 **Alternate Course A4** (*Approximately 10 nm*)
Start: Challenger Head
FS LM approximately 400 metres North of Flint and Steel Point
JB (p) LM in the vicinity of the entrance to Jerusalem Bay
C&C (p) LM in the vicinity of the entrance to Coal & Candle Creek
Finish: Challenger Head
- C.9 **Time Limits:**
Division 1 - 1600 hrs, Division 2 – 1605 hrs, Division 3 – 1610 hrs.

SQUADRON CRUISE – EMERGENCY MANAGEMENT

What happens in case of an accident or other emergency,

RRS 1.1 – Helping Those in Danger "A boat or competitor shall give all possible help to any person or vessel in danger."

What this means in practice:

- You are **obligated to assist** if you become aware of someone in danger (competitor or not).
- This applies **regardless of your race position** – safety always comes first.
- It includes situations like:
 - Man overboard (MOB)
 - Capsize or serious injury
 - Disabled vessel in unsafe conditions.

If an incident is serious (e.g. risk to life, serious injury, significant weather deterioration, vessel disabled, or difficulty recovering a man overboard), competitors are strongly advised to contact emergency services immediately:

Call Marine Rescue on VHF Channel 16 for urgent marine assistance

Dial 000 for life-threatening emergencies

It is important that those directly involved make the call, as emergency services may require real-time updates and direct communication with the vessel in distress.

For less serious incidents (e.g. minor injury or minor damage requiring assistance) - Contact the Race Officer and provide:

- Vessel name and sail number
- Your position
- Nature of the incident
- Assistance required

The Race Officer will respond and advise on the appropriate course of action. This may include coordinating assistance or directing you to contact emergency services.

Please note that the Race Officer is responsible for all vessels in the fleet and it is unlikely that the Committee Vessel will be able to render direct assistance. However, they may assist in coordinating support where possible.

If you are unable to raise assistance by the above means, you should use distress signals, including flares, to attract attention.

Useful Contacts

- Emergency: Phone: 000
- Marine Rescue Cottage Point: Phone: 9456 3055 or VHF 16
- Marine Rescue Broken Bay: Phone: 9999 3554 or VHF 16
- Marine Rescue Sydney: Phone: 9450 2468 or VHF 16
- Sydney Water Police: Phone: 1800 658 784
- Broken Bay Water Police: Phone: 9979 4044 or Boat Mobile: 0412 162 093

VHF MARINE RADIO

**EMERGENCY
VHF RADIO
CH 16
Mischief VHF CH 72**

AMBULANCE PICK UP POINTS

- A. **TAYLORS POINT WHARF**
Lot 7132 Taylors Pt Road
CLAREVILLE, 2107
Cross Street - Hudson Parade
- B. **CAREEL BAY WHARF**
4 George Street, AVALON BEACH, 2107
Cross Street - Therry Street
- C. **PALM BEACH FERRY WHARF**
1151 Barrenjoey Road, PALM BEACH, 2108
Cross Street - Palm Beach Road
- D. **THE ROYAL PRINCE ALFRED YACHT CLUB**
16 Mitala Street, NEWPORT, 2106
Cross Street - Prince Alfred Parade
- E. **CHURCH POINT WHARF**
1860 Pittwater Road, CHURCH POINT, 2105
Cross Street - McCarrs Creek Road
- F. **PATONGA BEACH WHARF**
6/8 Patonga Dr, PATONGA, 2256
Cross Street - Bay Street
- G. **BROOKLYN WHARF**
7 Dangar Road, BROOKLYN, 2083
Cross Street - Karoola Street



Competitors Notes: