



J/70 NSW CHAMPIONSHIP

13 - 15 January 2024



Sailing Instructions (SIs)

The Organising Authority (OA) is the Royal Sydney Yacht Squadron (RSYS) in conjunction with the J/70 Australia Class Association Inc (J70ACA).

The notation [NP] in a rule means that a boat may not protest another boat or request redress for a violation of that rule. This changes RRS 60.1. [DP] denotes a rule for which the penalty is at the discretion of the National Jury [NJ].

1. RULES

- 1.1 NoR contains a list of rules for this event. Competitors are reminded to take note of these.
- 1.2 Add to the definition *Proper Course*: 'A boat taking a penalty or manoeuvring to take a penalty is not sailing a *proper course*.'
- 1.3 The red flag displayed for a protest shall be positioned on the rope between the boom and the upper mainsail sheet block. The use of any other flag shall not be valid for protest purposes. This alters RRS 61.1
- 1.4 A boat shall not take any penalties while in the zone of a mark, other than a starting/finishing marks, or on the offset leg. In the last case the penalty shall be delayed and taken as soon as possible on the downwind leg. This changes rule 44.2

2. CHANGES TO THE SAILING INSTRUCTIONS

- 2.1 Any change to the SIs will be posted before 0900 on the day it will take effect, except that any change to the schedule of races will be posted by 2000 on the day before it will take effect.

3. COMMUNICATION

- 3.1 Notices to competitors will be posted on the official online notice board located at <https://app.sailsys.com.au/club/2/results/series/2976/noticeboard>
- 3.2 The regatta office is located at the RSYS Sailing Office and may be reached by email at sailing@rsys.com.au
- 3.3 Any questions regarding the NoR or these SIs shall be submitted in writing to the Race Committee (RC). The questions and any answers will be posted as in SI 3.1.
- 3.4 A competitors' briefing will be held on the first race day at 0930 hrs at the RSYS Clubhouse.

- 3.5 On the water, the RC intends to monitor and communicate with competitors on **VHF radio channel 74** ('the VHF Channel'). Failure of the RC to broadcast, mistaken broadcasts, or failure of a competitor to receive this information will not be grounds for a request for redress. This changes RRS 60.1(b).
- 3.6 [NP] [DP] Boats shall use the radio to report retirement from racing and may use the radio to request or provide assistance in an emergency.
- 3.7 [DP] Except as provided in SI 3.6, a boat shall not make voice or data transmissions while racing and shall not receive voice or data communication that is not available to all boats.

4. CODE OF CONDUCT

- 4.1 [DP] Competitors and support persons shall comply with reasonable requests from race officials.
- 4.2 [DP] Competitors and support persons shall handle any equipment provided by the organizing authority with care, seamanship, in accordance with any instructions for its use and without interfering with its functionality.

5. SIGNALS MADE ASHORE

- 5.1 Signals made ashore will be displayed on the flagpole located on the lawn of the RSYS
- 5.2 When flag AP is displayed ashore, "1 minute" is replaced with "not less than thirty (30) minutes" in The Racing Rules of Sailing (RRS) Race Signal AP.

6. SCHEDULE AND FORMAT OF RACES

- 6.1 Race Schedule

Day	Races	First Warning Signal
Saturday 13 January	3 races	1200
Sunday 14 January	3 races	1200
Monday 15 January	3 races	1200

- 6.2 Up to nine (9) races are scheduled with three (3) races per day. A maximum of four (4) races may be sailed in one day if needed to complete the scheduled number of races.
- 6.3 The scheduled time of the first warning signal each day is 1200. Subsequent races will start as soon as practicable.
- 6.4 On Monday 15th January, no warning signal will be made after 1600 local time. In the case of one or more general recall(s) when the initial warning signal was made prior to 1600, the RC may display subsequent warning signals after that time. This exception will not apply for a race that is postponed or abandoned

7. CLASS FLAG

- 7.1 The class flag is a blue J/70 logo on a white background.

8. RACING AREA

- 8.1 The racing area is Port Jackson, Sydney Harbour.
- 8.2 Addendum A shows the location of the racing area.
- 8.3 For the purposes of RRS 19 the following are continuing obstructions and prohibited areas:

- 8.3.1 Cardinal Marks – boats shall not sail within the areas bounded by cardinal marks.
- 8.3.2 Moorings – boats shall not sail within mooring areas. Naval and shipping moorings are excluded from this clause.
- 8.3.3 Garden Island and Chowder Bay – boats shall not sail within the yellow markers in the vicinity of Garden Island or in Chowder Bay.
- 8.3.4 Shark Island – boats shall not sail between the yellow AS Shark Island mark and the cardinal mark south of Shark Island in either direction or between Shark Island and the lighthouse to the north of shark Island.

9 COURSES

- 9.1 The courses to be sailed will be a windward-leeward format. The diagrams in Addendum B show the courses, including the order in which marks are to be passed, and the side on which each mark is to be left.
- 9.2 No later than the warning signal for each race, the RC vessel will:
 - 9.2.1 display the approximate magnetic bearing and distance to the first weather mark, and
 - 9.2.2 display a numeral pennant indicating the number of the course to be sailed.

10 MARKS

- 10.1 Marks 1, 2 (offset), 3P and 3S (gate), are yellow inflatable marks with the lettering RSYS.
- 10.2 New marks, as provided in SI 12, are yellow inflatable marks with the lettering RSYS and black bands.
- 10.3 The start and finish marks will be black and white checked inflatable marks with the lettering RSYS.

11 THE START

- 11.1 The starting line will be between the staff displaying an orange flag on the RC vessel at the starboard end and the course side of the starting mark at the port end.
- 11.2 To alert boats that a race will begin soon, orange starting line flags marking the line will be displayed with one long sound signal from the RC signal vessel for a minimum of 5 minutes before the warning signal is displayed.
- 11.3 Boats subject to individual recall under RRS 29.1 or boats breaking RRS 30.3 (*U Flag Rule*) or RRS 30.4 (*Black Flag Rule*) will be broadcast on the VHF Channel using bow numbers as a courtesy.
- 11.4 In the event of a General Recall or abandonment after the start during a RRS 30.4 (*Black Flag Rule*) start, the RC shall broadcast on the VHF Channel and display the bow number of any boat violating RRS 30.4 before the next warning signal. This changes RRS 30.4
- 11.5 The RC will attempt to make the broadcasts described in SI 11.3 and 11.4. However, the timing of such a broadcast, the sequence of the broadcasts or the failure to make or hear the broadcasts shall not be grounds for granting redress. This changes RRS 62.1(a)
- 11.6 A boat that does not start within five (5) minutes after her starting signal will be scored Did Not Start (DNS) without a hearing. This change is added to RRS A5.1.

12 CHANGING THE NEXT LEG OF THE COURSE

- 12.1 To change the next leg of the course, the RC will lay a new mark (or move the finishing line) and remove the original marks as soon as practicable. When in a subsequent change a new mark is replaced, it will be replaced with the original mark.
- 12.2 If only a single windward or leeward mark is in place, boats will leave that mark to port

13 THE FINISH

- 13.1 The finishing line is between the staff displaying a blue flag on the RC vessel and the course side of the finishing mark.
- 13.2 The Finishing Line for Courses 1 and 2 will be in the vicinity of Mark 1, and the committee vessel will be at the starboard end when viewed from the last mark.
- 13.3 The Finishing Line for Courses 3 and 4 will be in the vicinity of Marks 3P/3S (gate), and the committee vessel will be at the port end when viewed from the last mark.

14 PENALTY SYSTEM

- 14.1 A boat that has taken a penalty under RRS 31 or RRS 44.1 shall submit a completed penalty acceptance form at the RSYS Sailing Office within the protest time limit.
- 14.2 RRS Appendix T (Arbitration) applies.
- 14.3 The NJ may impose discretionary penalties other than disqualification for violations of RRS non-Part 2 rules. This SI does not apply to breaches of RRS 2, 28 or 31.
- 14.4 The NJ may impose discretionary penalties other than disqualification for violations of Class Rules, including the International J/70 Class Rules (J70CR) and the J/70 Equipment Regulations (J70ER). However, in no case shall the penalty for such a violation be less than a ten percent (10%) scoring penalty calculated pursuant to RRS 44.3(c). This changes RRS 64.6.

15 TIME LIMITS AND TARGET TIMES

- 15.1 The race time limit for each race is 80 minutes. The target time for each race is 50 - 60 minutes. Failure to meet the target time will not be grounds for a request for redress. This changes RRS 60.1(b).
- 15.2 Boats failing to finish within 20 minutes after the first boat sails the course and finishes within the race time limit will be scored Time Limit Expired (TLE) without a hearing, unless they subsequently retire, are penalized, or are given redress. The score for TLE is the number of finishers plus two points, but no worse than the score for DNF. This changes RRS 35 and is added to RRS A4, A5, and A10.
- 15.3 The RC will lower the finish line flags with one sound to indicate that the time limit has expired.

16 HEARING REQUESTS

- 16.1 Protests and requests for redress are to be lodged at the Race Office
- 16.2 The protest time limit each day is sixty (60) minutes after the RC signal vessel docks on that day. This time will be posted on the official online notice board within fifteen (15) minutes after the RC signal vessel docks
- 16.3 The second sentence of RRS 62.2 is replaced with: "If the request is based on an incident in the racing area, it shall be filed within the protest time limit for that day."
- 16.4 A notice of boats scored per RRS A5.1 each day will be posted on the official online notice board and at the Race Office no later than fifteen (15) minutes after the RC vessel docks on that day. The deadline for a request for redress based on these scores is the protest time limit for that day. This changes RRS 62.2.
- 16.5 The time limit for a request for redress based on the outcome of a scoring inquiry is 30 minutes after that outcome has been posted. This changes RRS 62.2.
- 16.6 The Categorization Protest Time Limit (see World Sailing Regulation 22.5.1) is the protest time limit for the first racing day
- 16.7 Hearing request forms are available at the Race Office or on the regatta website.
- 16.8 Penalty acceptance forms are available at the Race Office or on the regatta website.

- 16.9 Notices will be posted no later than fifteen (15) minutes after the protest time limit each day on the official online notice board to inform competitors of hearings in which they are parties or named as witnesses. Hearings will be heard as soon as possible.
- 16.10 On the last day of the event, a request for reopening a hearing shall be delivered within the protest time limit if the requesting party was informed of the decision on the previous day or no later than 30 minutes after the requesting party was informed of the decision on that day. This changes RRS 66.2.
- 16.11 On the last day of the event, a request for redress based on a jury decision shall be delivered no later than 30 minutes after the decision was posted. This changes RRS 62.2.

17 SCORING

- 17.1 Scoring shall be according to the Low Point Scoring System of RRS A2 and A4 as follows
- 17.2 When fewer than five (5) races have been completed, a boat's series score shall be the total of her race scores;
- 17.3 When five (5) or more races have been completed, a boat's series score shall be the total of her race scores excluding her worst score
- 17.4 Three (3) races are required to constitute a championship
- 17.5 Preliminary results will be posted on the event website as soon as possible after racing each day.
- 17.6 Competitors shall notify the RC of any scoring inquiry by filing a Scoring Inquiry Form available at the RSYS Sailing Office or the regatta website. The deadline to file a scoring inquiry is the protest time limit or thirty (30) minutes after the preliminary results have been posted for that day, whichever is later.

18 SAFETY REGULATIONS

- 18.1 [DP][NP] Prior to the warning signal of her first race each day, each boat shall check-in with the RC vessel in the starting area. Each boat shall pass close astern on starboard tack and hail her bow number. When a boat has been recognized, the RC will hail the boat's bow number.
- 18.2 [DP][NP] A boat that retires from a race or leaves the racing area between races shall notify the RC as soon as possible using the VHF Channel.
- 18.3 [DP][NP] A boat not participating in any of the day's racing shall inform the RC as soon as possible.
- 18.4 The penalty for breaking a rule in SI 18 shall be a twenty percent (20%) scoring penalty calculated pursuant to RRS 44.3(c) unless the Jury decides differently, applied without a hearing to a boat's first valid race of the day. This change is added to RRS A5.1. All competing boats shall be afloat by the close of check-in (see NoR 7).

19 COMMERCIAL SHIPPING

- 19.1 [NP] Boats shall comply with the following with regard to commercial shipping
- 19.1.1 Boats shall not pass between the bow of any seagoing ship and a dedicated Port Authority escort vessel whilst on escort duty and within 500 metres from the bow and 30 metres from the side or stern of the seagoing ship.
- 19.1.2 Boats shall maintain a minimum distance of 200m from the bow, and 30m from the sides or stern of any ferry displaying the orange diamond.
- 19.1.3 Boats must abide by traffic directions of NSW Maritime Boating Service Officers. Any yacht directed to stop or alter course by NSW Maritime Boating Service Officers as a result of an

anticipated breach of the above rules, incident/collision or complaint shall do so immediately.

- 19.1.4 Boats reported by NSW Maritime as having contravened NSW Maritime regulations shall be scored DNE (Non-excludable disqualification) without a hearing. This changes RRS 63.1.

20 BOW NUMBERS

- 20.1 Bow numbers will be supplied by the OA in accordance with the J70ER 6 and J70ER Appendix A as shown in Addendum C.
- 20.2 Bow numbers shall be displayed from the close of check in through the end of the event. It is the responsibility of the competitor to ensure that the bow numbers remain on the boat and obtain replacements as necessary.

21 REPLACEMENT OF CREW OR EQUIPMENT

- 21.1 Substitution of competitors is not allowed without written approval of the event Race Committee prior to racing on that day.
- 21.2 Repair, alteration, replacement, or substitution of damaged or lost equipment will not be allowed unless authorized before racing by the event Race Committee pursuant to J70ER 10.
- 21.3 Boats requesting approvals under SI 21 shall contact the event Race Committee for instructions:
- (a) If off the water: by phone or text message (see SI 29 for contact information);
 - (b) If on the water: hailing on the VHF Channel.

22 EQUIPMENT AND MEASUREMENT CHECK

- 22.1 [DP] Pursuant to J70ER 4, a boat, sails or equipment may be inspected at any time for compliance with the Event Equipment Rules (see J70ER 2), IJ70CA Class Rules (J70CR), the NoR and these SIs. On the water, when instructed by a member of the RC, a boat shall proceed immediately to a designated area for inspection.

23 EVENT ADVERTISING

- 23.1 [DP] [NP] Boats shall display any event advertising supplied by the OA, in accordance with World Sailing Regulation 20. If this rule is broken, World Sailing Regulation 20.9.2 applies.
- 23.2 [DP] [NP] Any required sponsor or event identification stickers, decals and flags shall be placed on the bow or boom, in the cockpit or on a shroud or stay as directed by the OA. They shall be displayed from the close of check-in through the end of the event. If required to be placed on the bow, they shall be placed immediately aft of the bow numbers. It is the responsibility of the competitor to ensure that the stickers remain on the boat and obtain replacements as necessary.

24 OFFICIAL VESSELS

- 24.1 The race committee vessel will be identified by the RSYS burgee surrounded by a white border.

25 SUPPORT TEAMS

- 25.1 [DP] [NP] Only registered Support Person Vessels (SPVs), including coach, press, private and spectator vessels that prominently display identification provided by the OA are allowed in the racing area. The person in charge of the competing boat(s) to which support vessels are attached shall acknowledge the presence of a support vessel on his check-in form and may pay the applicable fee on behalf of the support vessel.

- 25.2 [DP] [NP] All SPVs shall carry a working VHF radio capable of transmitting and receiving normal domestic and international channels, including the VHF Channel.
- 25.3 [DP] SPVs, and team leaders, coaches, and other support personnel, shall stay more than 150 meters to leeward of the starting line and its extensions during the starting sequence, and after the start will stay 150 meters outside the course diamond at all times and from any competing boats that are racing.
- 25.4 [DP] [NP] SPVs shall comply with any additional directions given by the OA, the RC or the Jury, including requests for assistance with rescues. Failure to comply may result in the accreditation being withdrawn and all access to the club facilities, grounds and docks being denied.
- 25.5 [DP] [NP] SPVs shall be kept in the places, both afloat and ashore, that they specify during check-in.
- 25.6 Operators of SPVs and all competitors are reminded that J70CR I.3 (Outside Assistance) is in effect. See NoR 1.

26 TRASH DISPOSAL

- 26.1 [DP] Trash shall be placed in the appropriate containers when the boats return to shore.

27 BERTHING

- 27.1 [DP] Boats shall be kept in their assigned places while in the RSYS Pond.

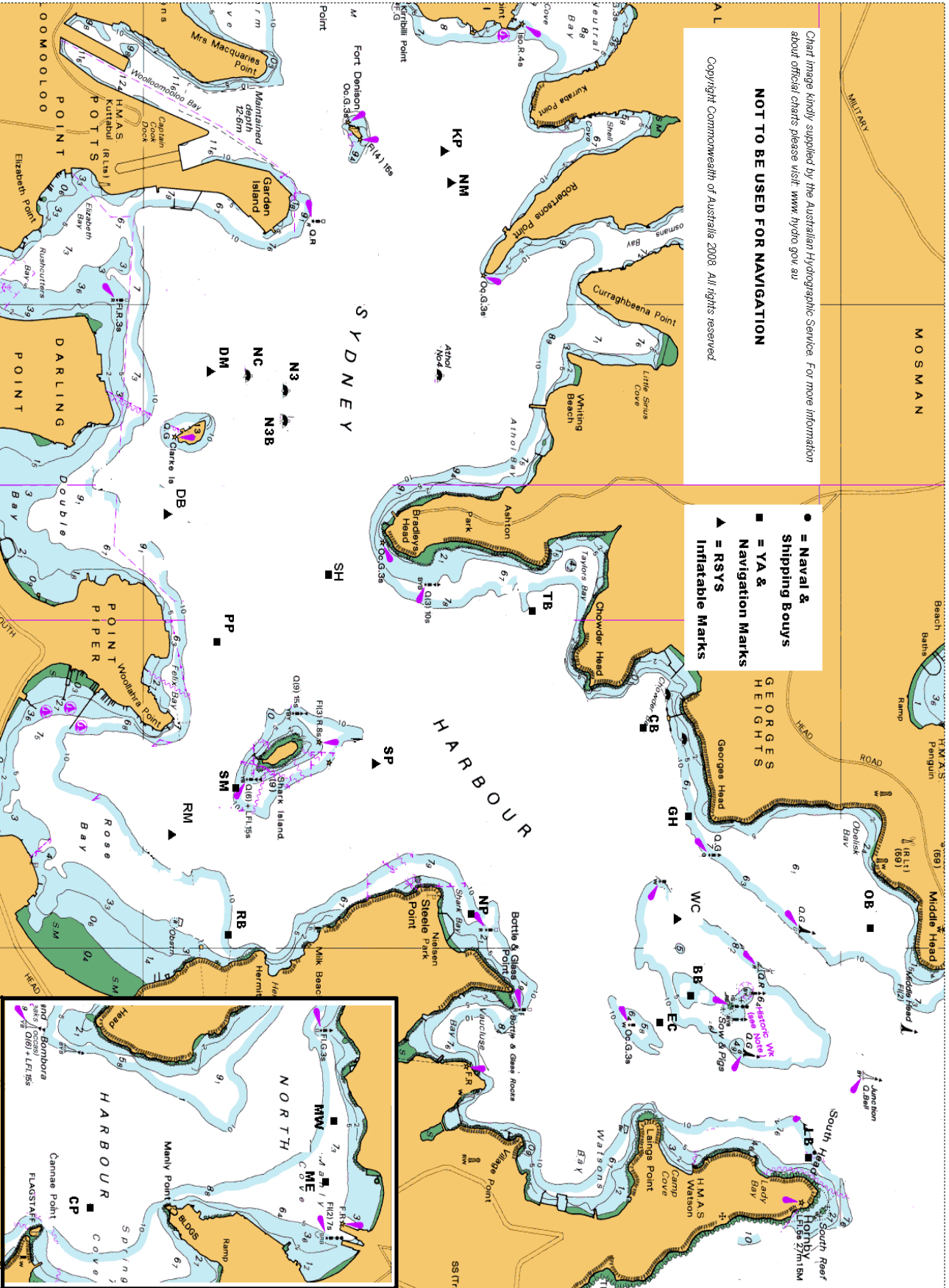
28 PRIZES

- 28.1 Prizes will be awarded as specified in the NoR.

29 RACE OFFICIALS

- 29.1 Host Club Contact: Rob Ridley Manager RSYS Sailing Office 0418 645 032
- 29.2 Host Club Address: 33 Peel Street, Kirribilli NSW 2061 Ph 02 9955 7171
- 29.3 J70 Australia Class Association contacts:
- info@j70australia.org
 - Karyn Gojnich 0419 682 767
 - Steve Proud 0418 243 727

Addendum A RACE AREA



Addendum B

COURSES

(diagrams not drawn to scale)

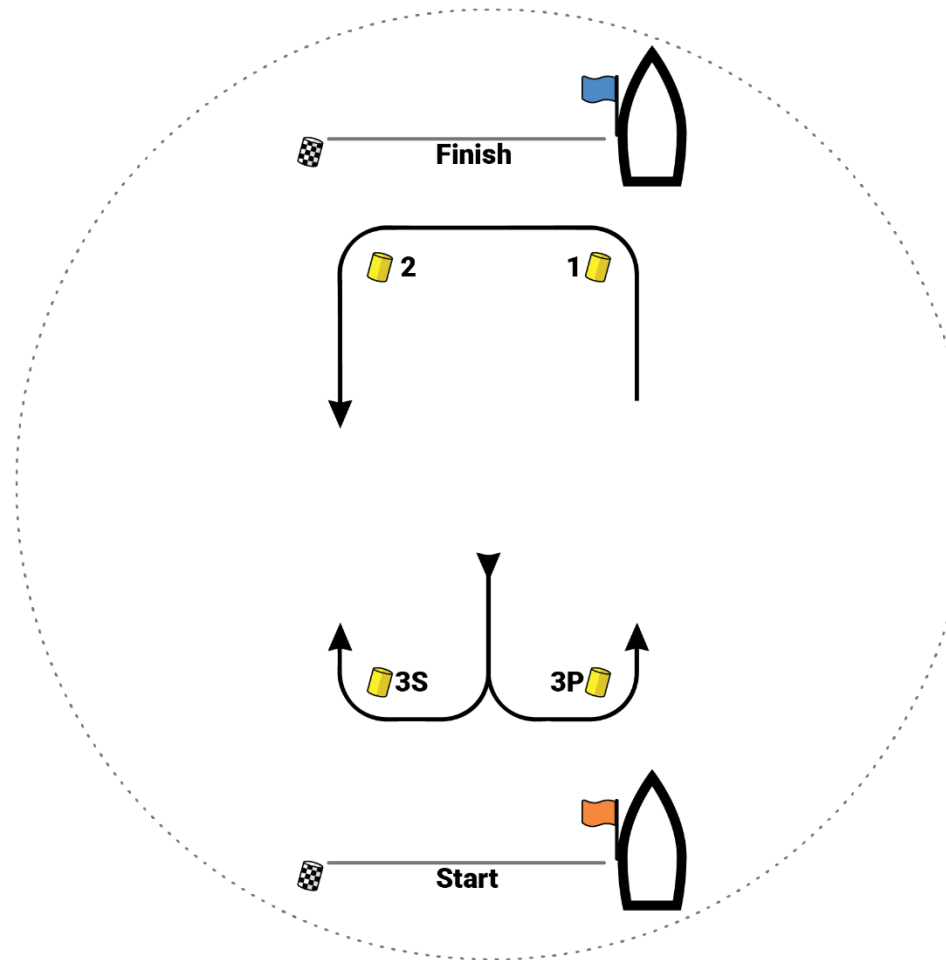
Course 1 – Numeral Pennant 1

Start - 1 - 2 - 3P/3S - 1 - 2 - 3P/3S - Finish

Course 2 – Numeral Pennant 2

Start - 1 - 2 - 3P/3S - 1 - 2 - 3P/3S -

1 - 2 - 3P/3S - Finish



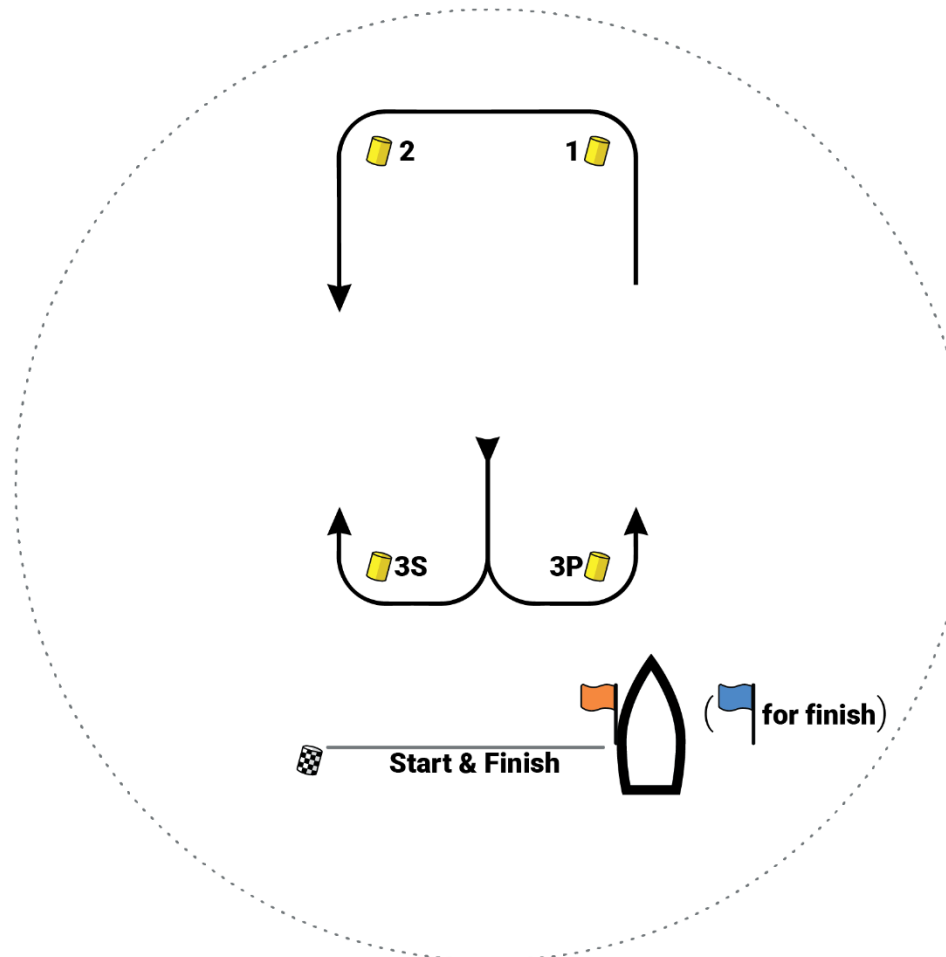
Course 3 – Numeral Pennant 3

Start - 1 - 2 - 3P/3S - 1 - 2 - Finish

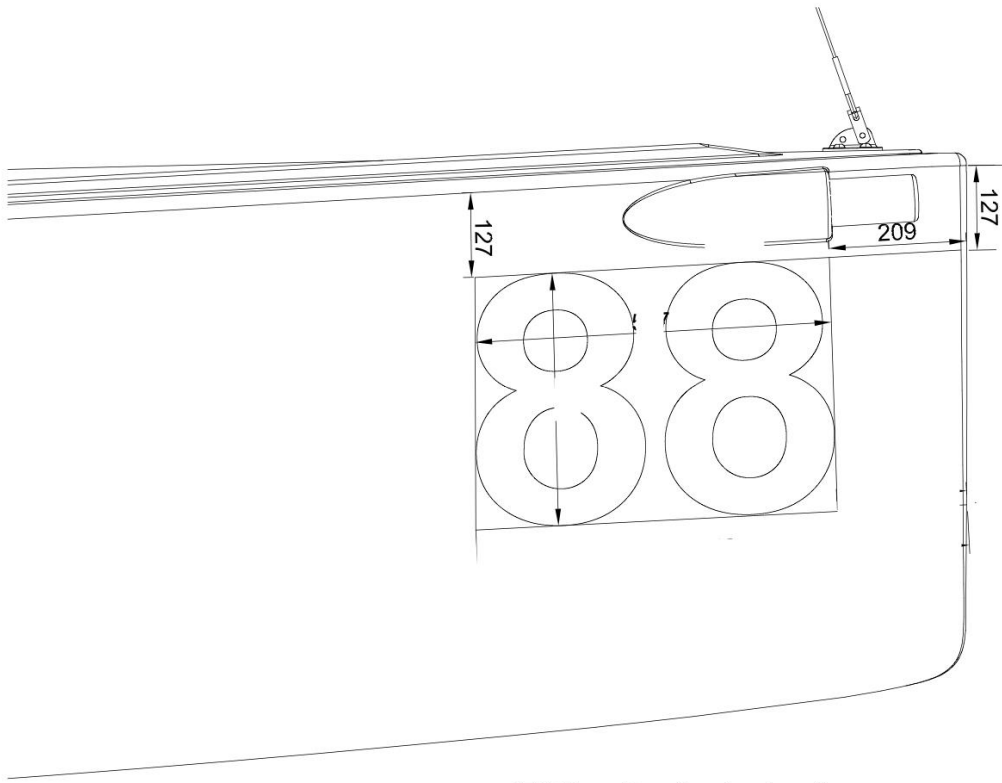
Course 4 – Numeral Pennant 4

Start - 1 - 2 - 3P/3S - 1 - 2 - 3P/3S -

1 - 2 - Finish



Addendum C
BOW NUMBERS



J/70 Class Bow Number Location