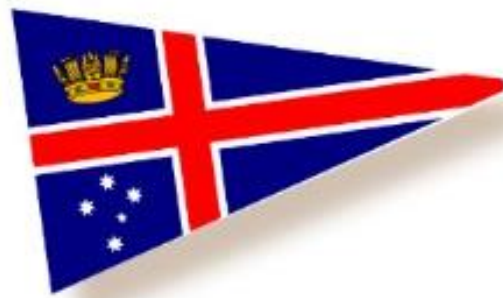


188th Australia Day Regatta

ON SYDNEY HARBOUR

Friday 26 January 2024



CONDUCTED BY

ROYAL SYDNEY YACHT SQUADRON

ON BEHALF OF

AUSTRALIA DAY
MANAGEMENT COMMITTEE

Sailing Instructions (SIs)

The Organising Authority (OA) is Royal Sydney Yacht Squadron (RSYS) in conjunction with the Australia Day Management Committee.

The notation [NP] in a rule means that a boat may not protest another boat for infringing that rule. This changes RRS 60.1(a). [DP] denotes a rule for which the penalty is at the discretion of the protest committee.

1. Rules

1.1 Racing will be governed by the rules, as defined in the 2021-2024 Racing Rules of Sailing (RRS) of World Sailing, and the prescriptions and special regulations of Australian Sailing (AS), as may be amended.

1.2 In the event of conflict between any of the rules or regulations, other than RRS, the sailing instructions will prevail. This changes RRS 63.7.

2. Changes to the SIs

2.1 Changes to the sailing instructions will be posted on the official noticeboard and RSYS website by 1000 hours, 26th January 2024. After this time, any changes to the sailing instructions, including oral instructions given on the water, will be indicated by displaying code flag L on the committee vessel.

3. Communications with Competitors

3.1 On the water, the race committee intend to monitor and communicate with competitors on VHF channel 73.

3.2 [DP] Boats are required to use the VHF radio to report retirement from racing.

4 Code of Conduct

4.1 [DP] Competitors and support persons shall comply with reasonable requests from race officials.

5 Signals made Ashore

5.1 Signals made ashore will be displayed on the RSYS main flag mast located on the Squadron's front lawn.

6 Racing Area

6.1 Racing shall be conducted on Port Jackson, Sydney Harbour.

7 Prohibited Areas/Obstructions

7.1 The Royal Australian Navy may station a Regatta Flagship in the vicinity of the Start Line. A 60 metre exclusion zone will be in place around the Regatta Flagship. All boats are to keep outside this area. The Regatta Flagship will arrive in the Regatta starting area at about 1300 hrs. All boats must keep well clear during this manoeuvre.

7.2 For the purposes of RRS 19 the following are continuing obstructions and prohibited areas:

7.3 **Cardinal Marks** – boats shall not sail within the areas bounded by cardinal marks. These areas are prohibited and deemed to be obstructions.

7.4 **Moorings** – boats shall not sail within mooring areas. These areas are prohibited and deemed to be obstructions. Naval and shipping moorings are excluded from this clause.

7.5 **Garden Island and Chowder Bay** – boats shall not sail within the yellow markers in the vicinity of Garden Island or in Chowder Bay. These areas are prohibited and deemed to be continuing obstructions.

7.6 **Shark Island** – boats shall not sail between the yellow AS Shark Island mark and the cardinal mark south of Shark Island in either direction. This area is prohibited and deemed to be a continuing obstruction.

8 Divisions

8.1 Allocation of divisions shall be at the discretion of the race committee and shall be advised on the list of entries available from the RSYS website <https://app.sailsys.com.au/club/2/results/series/3206/races>

9 The Start

9.1 The start line shall be in the vicinity of Point Piper.

The start signals will be as shown below in 9.2 (this changes RRS 26)

9.2 Races are scheduled as per the following starting sequence:

| Time | Event | Signal Displayed | Signal Removed |
|------|--|------------------|----------------|
| 1325 | Warning Classic Division 1 non-spin | Flag P | |
| 1330 | Start Classic Div 1 non-spin, Warning Classic Div 2 non-spin | Flag W | Flag P |
| 1335 | Start Classic Div 2 non-spin, Warning Division 1 | Flag Q | Flag W |
| 1340 | Start Division 1, Warning Division 2 | Flag K | Flag Q |
| 1345 | Start Division 2, Warning Division 3 | Flag R | Flag K |
| 1350 | Start Division 3, Warning Division 1 non-spin | Flag U | Flag R |
| 1355 | Start Division 1 non-spin, Warning Division 2 non-spin | Flag J | Flag U |
| 1400 | Start Division 2 non-spin, Warning Division 3 non-spin | Flag T | Flag J |
| 1405 | Start Division 3 non-spin, Warning Historical Skiff | Flag F | Flag T |
| 1410 | Start Historical Skiff | | Flag F |

9.3 A boat starting later than 4 minutes after her starting signal may be recorded as a non-starter.

9.4 Should one boat appear at the start, that boat shall be entitled to sail the course.

9.5 The starting line will be between the staff displaying an orange flag on the committee vessel at the starboard end and the course side of a yellow inflatable mark at the port end.

10 The Courses

10.1 Regardless of the conditions on the day the following courses shall apply. See chart for approximate location of marks.

| | |
|---|---|
| Classic Non-Spin 1 & 2 | Start - CBS - BB - NP - OB - SM - Finish |
| Division 1 | Start - OB - MW - ME - LB - SM - OB - SM - Finish |
| Division 2 & Division 1 Non-spin | Start - OB - LB - NP - OB - SM - EC - SM - Finish |
| Division 3 & Division 2 Non-Spin | Start - OB - BB - SM - CBS - SM - Finish |
| Division 3 Non-Spin & Historical Skiffs | Start - TB - BB - SM - TB - SM - Finish |

BB Beashel Mark - AS buoy, south-west of Sow and Pigs.

CBS Chowder Bay South Mark - AS buoy off southern shore of Chowder Bay.

EC Eastern Channel - AS buoy approximately 100m west of the Eastern Channel Pile Light.

LB Lady Bay Mark - AS buoy off northern end of Lady Bay.

ME Manly East Mark - Easternmost AS buoy in Manly Cove.

MW Manly West Mark - AS Buoy, 400m SSW of Manly Warf.

NP Neilsen Park Mark - AS buoy north of Steele Point.

OB Obelisk Bay Mark - AS buoy east of Obelisk Bay.

SM Shark Island Mark - AS buoy approx. 30m south-east of the south cardinal mark off Shark Island. The area between SM and the south cardinal mark is a continuing obstruction and boats shall not pass between them in either direction.

TB Taylor Bay Mark - AS buoy in Taylor Bay.

10.2 All marks are to be left to starboard.

11 Recalls

11.1 There shall be no recalls.

11.2 [NP] [DP] Boats identified as starting prematurely may be penalised with a 10% time penalty (i.e. elapsed time x 1.10) or disqualified at the absolute discretion of the race committee. This changes RRS 28, RRS 29, RRS 60 and RRS 62.1.

12 The Finish

- 12.1 The finish line shall be between the staff displaying a blue flag on the committee vessel at the port end of the line and a yellow inflatable mark at the starboard end of the line.
- 12.2 The finishing line shall be in the vicinity of Point Piper.

13 Special Conditions

- 13.1 [DP] Spinnakers are not permitted in the classic divisions 1 & 2 and the non-spinnaker divisions 1, 2 & 3.

14 Time Limit

- 14.1 The time limit shall be 1700 hours **Absolute**. Boats failing to finish within the time limit shall be scored "Did Not Finish". If no boat finishes within the time limit the race committee shall abandon the race. This changes RRS 35.

15 Protests

- 15.1 Protests shall be lodged at the RSYS Sailing Office by 1000 on 29th January 2024. World Sailing Racing Rules of Sailing forms are available from the RSYS Sailing Office.

16 Prizes

- 16.1 See Notice of Race.

17 Other Instructions

- 17.1 All boats are encouraged to enter crew contact details (including the skipper) in the SailSys race management system prior to the boat's first warning signal.
- 17.2 Boats shall not interfere with the Commercial or Defence shipping of the Port. The attention of skippers is drawn to NSW Roads and Maritime Services (NSW RMS) regulations regarding the right of way of vessels entering or leaving port, ferries displaying orange diamonds and vessels engaged in towing. NSW RMS regulations specify "*Priority over Sail – some Commercial Ferries on Sydney Harbour display an orange diamond shape which grants priority of way over sailing vessels. Sailing vessels must keep a minimum distance from these ferries of:*
- 200 metres from the bow
 - 30 metres from sides or stern.

Do not attempt to cross the path of an approaching ferry displaying this signal".

Attention is drawn to the guidelines published in the appendices posted on the RSYS website.

- 17.3 Boats found to have interfered with commercial shipping may be subject to action by the race committee in accordance with RRS 60.2.
- 17.4 All boats must abide by traffic directions of NSW RMS Boating Service Officers and NSW Port Authority. Any boat directed to stop or alter course by NSW RMS Boating Service Officers as a result of an anticipated breach of the above rules, incident/collision or complaint shall do so immediately.
- 17.5 Any boats reported by NSW RMS as having contravened NSW RMS regulations shall be disqualified without a hearing. This changes RRS 63.1. Any alleged infringement of this clause shall not be grounds for protest by another competitor.
- 17.6 Reporting of Incidents – Competitors are required to notify the sailing office of any marine incident occurring during racing whether or not it results in a race protest or a report to NSW RMS. The attention of competitors involved in an accident is drawn to the requirements of NSW RMS published on the RSYS website.
- 17.7 Boats shall not carry anchors protruding beyond the bow while racing.

18 Responsibilities

- 18.1 **Risk Warning** - The OA advises owners, skippers and anyone who participates in yachting events conducted by the OA that participation in the sport of yachting, whether racing or otherwise, can be dangerous and can result in harm, personal injury and property damage. The OA is not responsible for any harm or injury suffered by any person in any yachting event of whatever nature conducted by the OA.

All participants acknowledge that competing in yachting events may be dangerous and may result in harm or personal injury and they participate in such events aware of such dangers and voluntarily accept any risk of harm.

- 18.2 **Competitors' Declaration** - It is the responsibility of owners and skippers to ensure that each boat nominated on the entry form complies with the 'rules' as defined in the RRS. The owner or person who enters the boat declares to the OA that the nominated boat will at all times comply with the requirements of Australian Sailing, the notice of race and the sailing instructions, and that the owner or person who enters the boat:

- (a) warranting to the OA that he or she will draw the attention of any person who competes on the boat the subject of the entry in any event conducted by the OA to the risk warning above, and
- (b) acknowledging receipt of the risk warning above and releasing the OA from any claim or liability whatsoever for any harm or personal injury suffered by him or her, or by any person claiming through him or her, in any event conducted by the OA, and
- (c) declaring to the OA that the nominated boat has not been grounded during the past twelve (12) months.

18.3 Disclaimer of Liability

- (a) All those taking part in these races do so at their own risk and responsibility. Specific attention is drawn to RRS 3 which states; "The responsibility for a boat's decision to participate in a race or to continue racing is hers alone". The RSYS, sponsors, respective class associations, the race committee and other race officials are not responsible for any damage or injury either afloat or ashore.
- (b) The OA, sponsors, respective class associations, the race committee and other race officials are not responsible for the seaworthiness of a boat whose entry is accepted or the sufficiency or adequacy of its equipment.
- (c) All those taking part in these races are reminded of their obligations as set out in the Australian Sailing Special Regulations clause 1.02 Responsibility of the Person in Charge.

19 Insurance

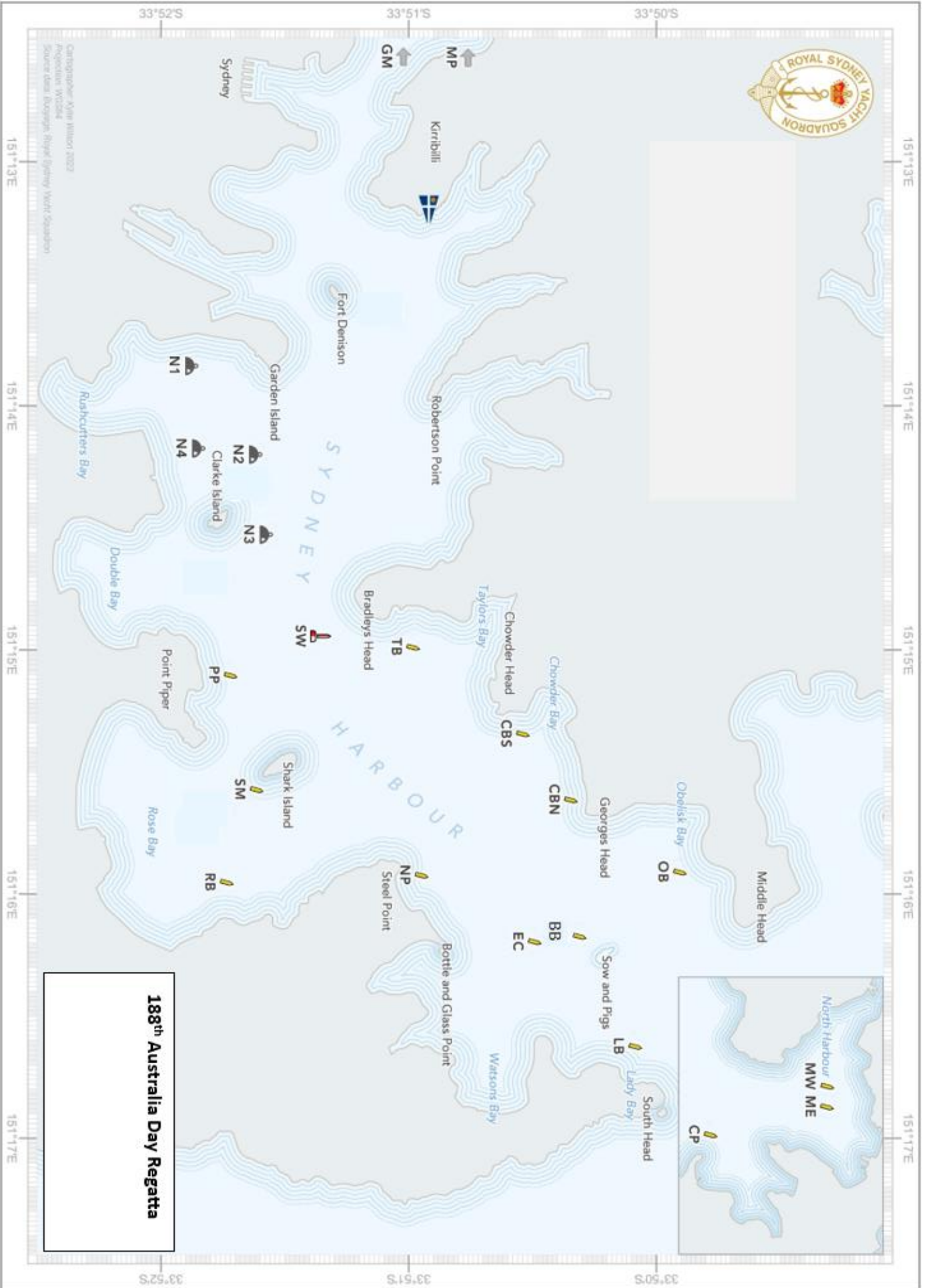
- 19.1 Each participating boat shall be covered by current third-party property liability insurance and third-party personal liability insurance of not less than \$10,000,000 (ten million) for each separate incident. All insurance cover shall be maintained during the period of racing, and it is the owner's responsibility to ensure a current Certificate of Currency is lodged.

20 Regatta Office

- 20.1 The Regatta Office is situated;
Royal Sydney Yacht Squadron – Sailing Office
33 Peel Street, Kirribilli, NSW 2061
Phone: 9017 0152
sailing@rsys.com.au



Cartographer: Xian Huihui 2022
Projection: WGS84
Source data: Bathymetry: Royal Sydney Yacht Squadron



188th Australia Day Regatta

