



The following descriptions of marks and buoys are to be read in conjunction with the individual series Sailing Instructions and the Chartlet:

- CB **Chowder Bay Mark** – AS buoy off southern shore of Chowder Bay (the southernmost buoy of the two AS buoys in Chowder Bay)
- CI **Clarke Island** – Summit of Clarke Island and pile south of Clarke Island
- CP **Cannae Point** – AS buoy west of Cannae Point (Flagstaff)
- DB **Double Bay** – RSYS mark off Double Bay, approximately midway between Clarke Island and Point Piper
- DM **Darling Point Mark** – RSYS mark north west of Clarke Island
- EC **Eastern Channel Mark** – the southernmost buoy of the two AS buoys west of Watsons Bay
- FD **Fort Denison**
- GH **Georges Head Mark** – AS buoy approximately 200m south west of Georges Head
- GM **Goat Island Mark** – RSYS mark approximately 150m west of Goat Island
- KP **Kirribilli Point Mark** – RSYS mark east of Kirribilli Point
- LB **Lady Bay Mark** – AS buoy off northern end of Lady Bay
- ME **Manly East Mark** – Easternmost AS buoy in Manly Cove
- MP **Manns Point Mark** – RSYS mark south east of Manns Point
- MW **Manly West Mark** – AS buoy 400m SSW of Manly Wharf
- N2 **Naval Buoy No. 2** – Approximately 250m North West of Clarke Island
- N3 **Naval Buoy No. 3** – Approximately 200m North of Clarke Island
- NP **Nielsen Park Mark** – AS buoy north of Steele Point
- OB **Obelisk Bay Mark** – AS buoy east of Obelisk Beach
- PP **Point Piper Mark** – AS buoy north of Point Piper
- RB **Rose Bay East Mark** – AS buoy in Rose Bay approximately 200m off the eastern shore of Rose Bay in front of the convent
- RM **Rose Bay Mark** – RSYS mark in Rose Bay approximately 550m south east of Shark Island
- SM **Shark Mark** – AS buoy approximately 30m south east of the Shark Island south cardinal mark. Boats shall not sail between SM and the south cardinal mark in either direction.
- SW **Safe Water Mark** – Approximately 300 m south east of Bradleys Head
- SP **Sow and Pigs** – AS buoy south-west of Sow and Pigs (Beashel buoy)
- TB **Taylors Bay Mark** – AS buoy in Taylors Bay

NOTES: Cardinal Marks – A boat shall not sail within the areas bounded by Cardinal Marks. These areas are prohibited and deemed to be continuing obstructions.

 AS buoys – Australian Sailing buoys referred to in these Sailing Instructions will be yellow cylindrical or spar shaped buoys and may be replaced with a different mark without warning.

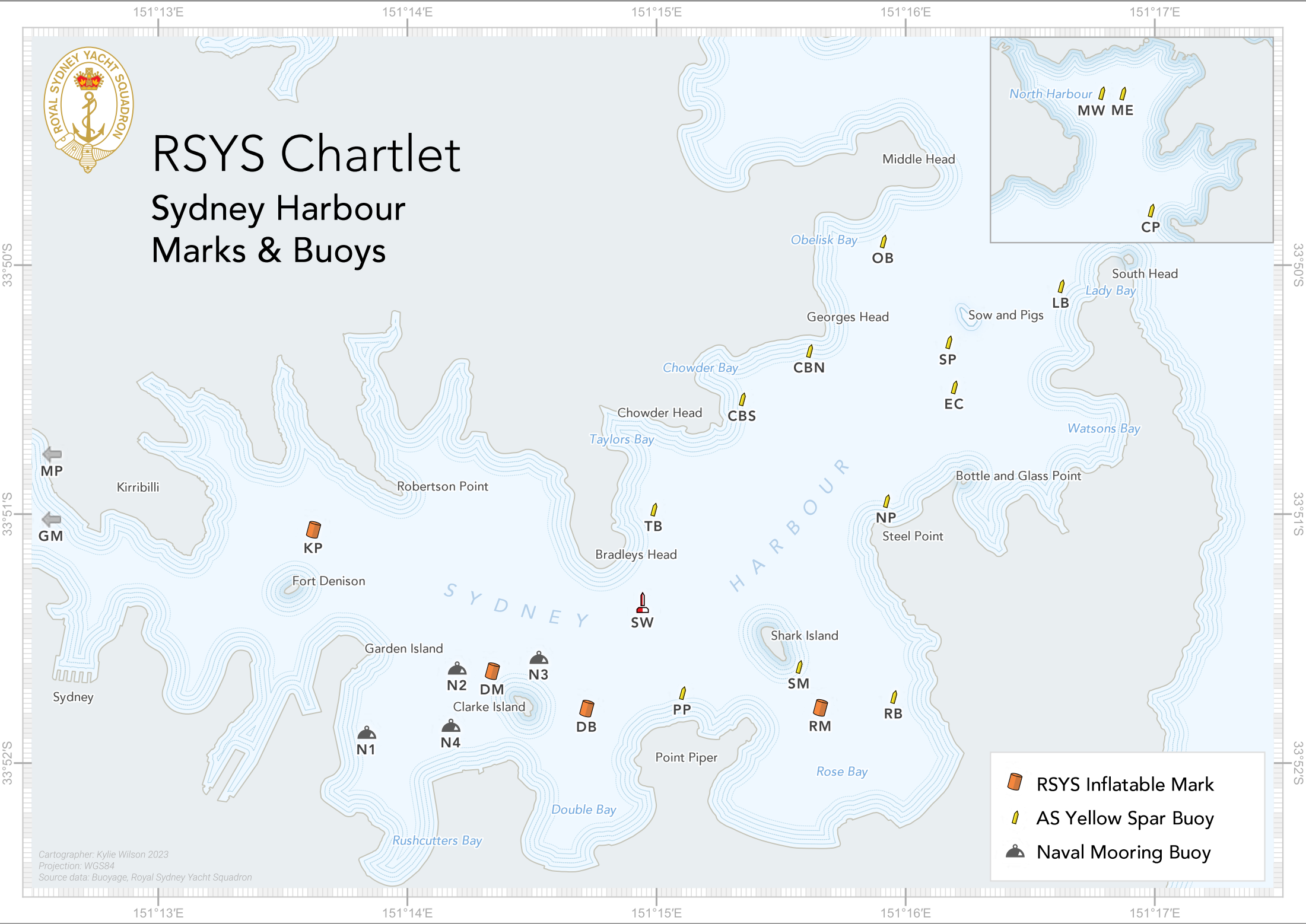
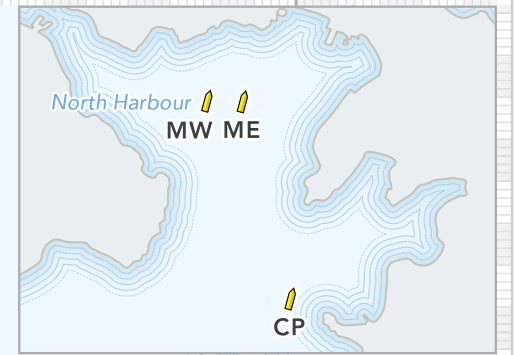
 RSYS marks – RSYS marks referred to in these Sailing Instructions will be orange inflatable marks with the lettering RSYS.






RSYS Chartlet

Sydney Harbour

Marks & Buoys



-  RSYS Inflatable Mark
-  AS Yellow Spar Buoy
-  Naval Mooring Buoy

Cartographer: Kylie Wilson 2023
Projection: WGS84
Source data: Buoyage, Royal Sydney Yacht Squadron